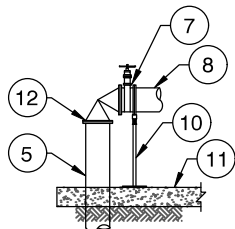
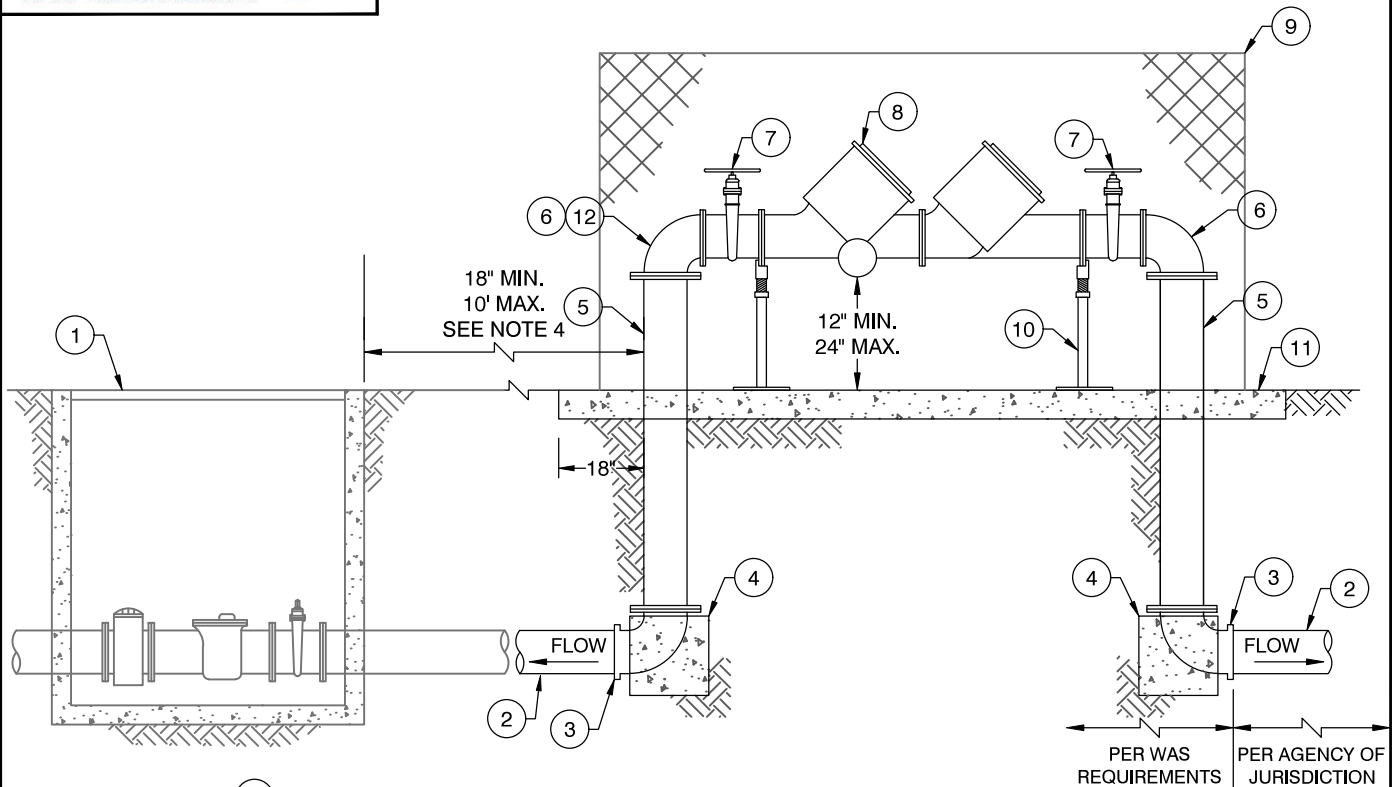


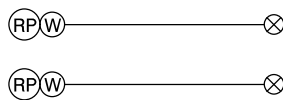
Best Water! Best Service!



# GARDNERVILLE WATER COMPANY - 3" & LARGER RP REDUCED PRESSURE PRINCIPAL & DOUBLE CHECK BACKFLOW PREVENTION ASSEMBLY



**DETAIL 'A'**  
SEE NOTE 5



LEGEND ON PLANS

## NOTES:

1. INSTALL WARNING/IDENTIFICATION TAPE AS SHOWN ON WP-01.
2. LOCATE BACKFLOW PREVENTION DEVICE (BPD) IN SUCH A MANNER THAT WILL ALLOW THE DEVICE TO BE READILY ACCESSIBLE FOR INSPECTION & REPAIR.
3. INSTALL A CASING ENCASED IN CONCRETE WHEN THE DISTANCE BETWEEN THE METER BOX AND THE RISER TO THE BPD EXCEEDS 18". NO CONNECTIONS OF ANY KIND WILL BE PERMITTED IN THIS AREA, INSPECTION REQUIRED PRIOR TO BACKFILL.
4. INSTALL AN ANGLE PRESSURE REDUCING VALVE IN LIEU OF THE FIRST 90° ELL WHEN SYSTEM PRESSURE EXCEEDS 1.03 MPa (150 PSI) OR WHEN RECOMMENDED BY THE BACKFLOW MANUFACTURER.
5. TESTING SHALL BE CONDUCTED IN ACCORDANCE TO GWC BACKFLOW POLICY SPECIFICATIONS PRIOR TO ACCEPTANCE BY THE DISTRICT.
6. BPD & APPURTENANCES INSTALLED FOR THE USE OF RECYCLED WATER SHALL BE IDENTIFIED MATERIALS SHALL BE SELECTED FROM THE APPROVED MATERIALS LIST.
7. ELECTRICAL SUPPLY SOCKETS MUST BE AWAY FROM WATER RELIEF PORT AND TESTCOCKS.

ITEM NO.	SIZE AND DESCRIPTION	ITEM NO.	SIZE AND DESCRIPTION
1	METER VAULT & METER ASSEMBLY	7	FLANGED RESILIENT WEDGE GATE VALVE
2	PVC OR DUCTILE IRON PIPE	8	REDUCED PRESSURE BACKFLOW DEVICE
3	FLG X FLG OR MJ/PO X FLG 90° BEND	9	ENCLOSURE (OPTIONAL)
4	CONCRETE THRUST BLOCK	10	ADJUSTABLE VALVE SUPPORT
5	FLANGED DUCTILE IRON PIPE	11	CONCRETE SLAB, MIN. 4" THICK X 36" WIDE
6	FLANGED 90° BEND, SEE NOTE 5	12	FLANGED ANGLE PRESSURE REDUCING VALVE SEE NOTE 5

NO.	REVISION	DATE	GARDNERVILLE WATER COMPANY - STANDARD DETAIL	DRAWING NO.
1	REVISION	05/19	3" & LARGER RP - REDUCED PRESSURE PRINCIPAL & DOUBLE CHECK BACKFLOW PREVENTION ASSEMBLY TYPICAL INSTALLATION STANDARD EXTERNAL BACKFLOW PREVENTER - YEAR ROUND SERVICE	RP - 3 INCH +
2	2022 UPDATES	09/22		
				DATE: 09/22 PAGE: 17