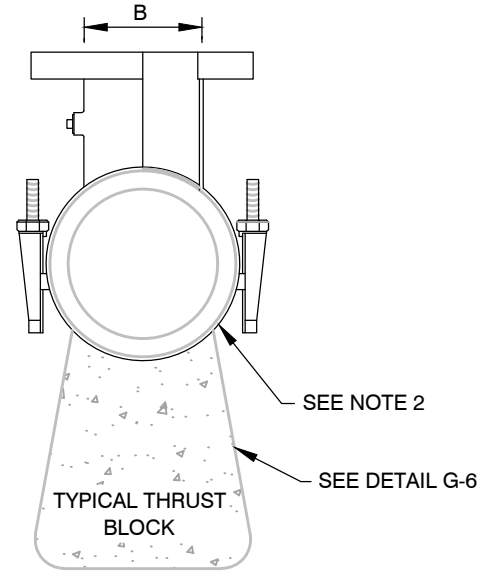
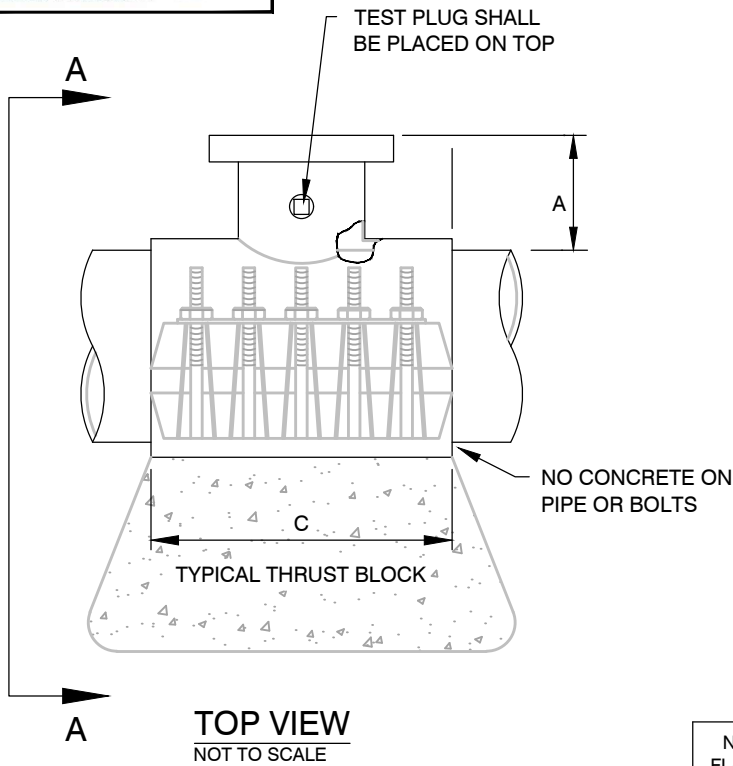


Best Water! Best Service!



GARDNERVILLE WATER COMPANY - TAPPING SLEEVE (G-12)



SECTION A-A
NOT TO SCALE

NOTES:

1. THE CONTRACTOR SHALL CONTACT GWC A MINIMUM OF 2 BUSINESS DAYS PRIOR TO SCHEDULING HOT TAP TO COORDINATE DATE AND TIME. GWC WILL SUPERVISE ALL HOT TAPS.
2. MATERIAL USED FOR THRUST BLOCKING SHALL NOT PREVENT ACCESS TO THE BOLT ASSEMBLY.
3. THRUST BLOCKS SHALL NOT BE POURED UNTIL PRESSURE TEST AND TAPPING ARE COMPLETE.
4. MINIMUM DISTANCE BETWEEN TAP, SADDLE, COLLARS, JOINTS, SERVICE TAPS, ETC. SHALL BE 3 X DIAMETER OF PIPE MIN.
5. PRIOR TO HOT TAPPING, THE SADDLE SHALL BE HYDROSTATICALLY PRESSURE TESTED. GWC PERSONNEL SHALL SUPERVISE PRESSURE TESTING, INSPECTIONS, AND DISINFECTION.
6. ANY HOT TAPS GREATER THAN 2-INCHES WILL BE BY AN APPROVED CONTRACTOR, UNLESS WAIVED BY GWC.
7. ASBESTOS CEMENT PIPE REQUIRES 2-INCH TAPPING SLEEVE AND DETAILED PER DESIGN ENGINEER.

NOM. FLANGE	A	B	C	# BOLTS
4	4	5 ¹ / ₃₂	16	10
6*	4 ¹ / ₂	7 ¹ / ₃₂	16	10
8*	4	9 ¹ / ₃₂	20	14
10	5 ¹ / ₂	11 ¹ / ₃₂	24	16
12**	6 ¹ / ₂	13 ¹ / ₃₂	30	30

* TAPPING SLEEVES IN THE 24" NOM. PIPE SIZE RANGE WITH 6" OR 8" FLANGES ARE 24" LONG W/ 24" BOLTS.

** TAPPING SLEEVES IN THE 12" & 14" NOM. PIPE SIZE RANGE W/ 12" FLANGE ARE 24" LONG W/ 24" BOLTS

MATERIAL SPECIFICATIONS

SHELL: 304 STAINLESS STEEL

LUGS: 304 STAINLESS STEEL

BOLTS/WASHERS/NUTS: 5/8" DIA., 304 STAINLESS STEEL

GASKETS: VIRGIN SBR COMPOUNDED FOR WATER SERVICE. ASTM D2000-80MA 4AA607 FULL GASKET 360° PIPE COVERAGE

FLANGE: 304 STAINLESS STEEL OR HIGH TENSILE DUCTILE (NODULAR) IRON, ASTM A536-80, GRADE 65-45-12.

PRESSURE RATING:

4" THROUGH 8" - 200 PSI

8" THROUGH 24" - 175 PSI

NO.	REVISION	DATE	GARDNERVILLE WATER COMPANY - STANDARD DETAIL	DRAWING NO.	
			<h1 style="margin: 0;">TAPPING SLEEVE</h1>	<h2 style="margin: 0;">G-12</h2>	
				DATE:	PAGE:
				09/22	12